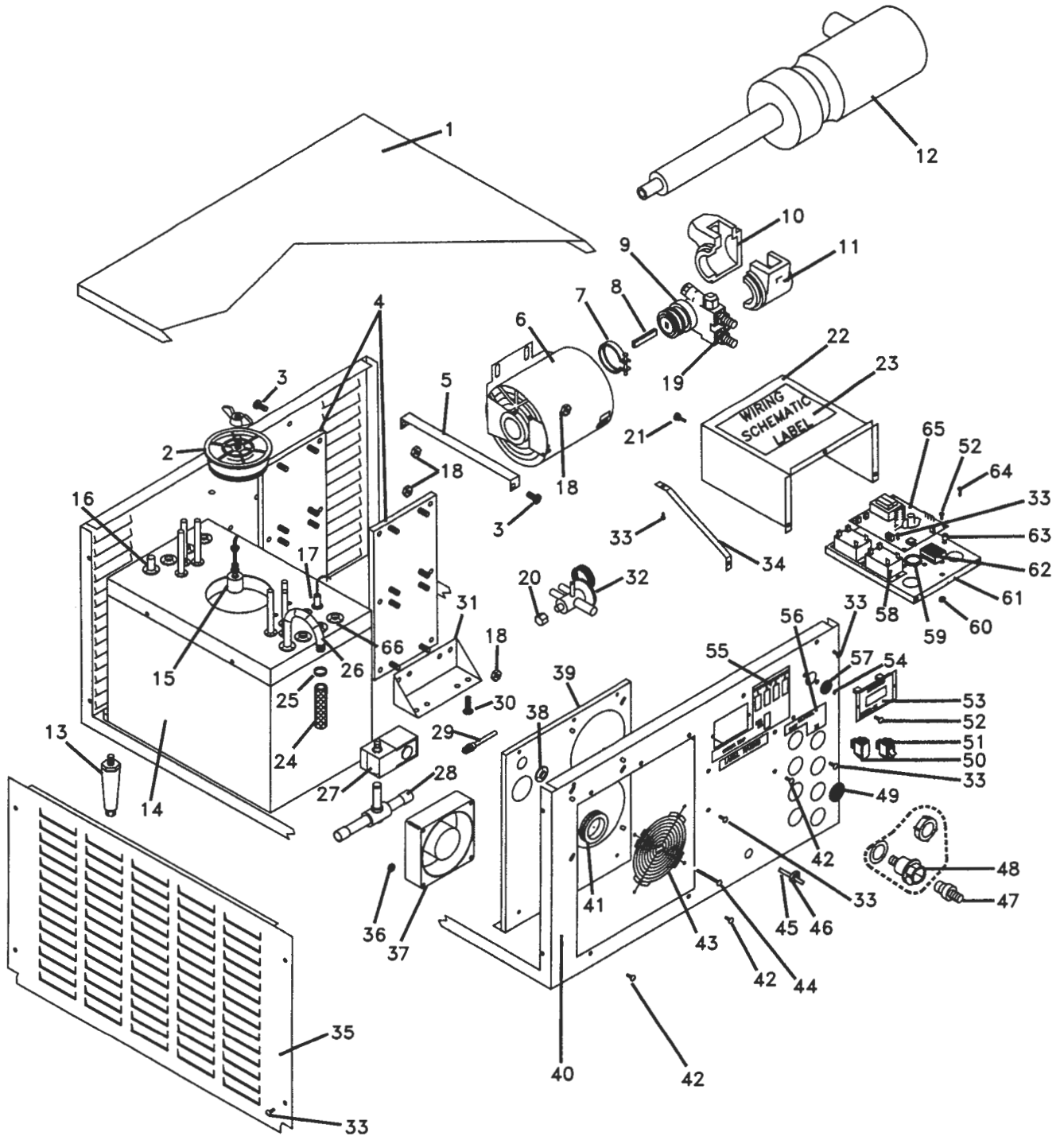


DOVE MANUFACTURING INC.  
GCR 2000

5979A  
02/16/2006



CORPORATE OFFICES

**CLELAND SALES CORPORATION**

11051 VIA EL MERCADO, LOS ALAMITOS, CA 90720  
PHONE (562) 598-6616 FAX (562) 598-3858

PLANT

**DOVE MANUFACTURING INC.**

3440 S. Hwy W, WINFIELD, MO. 63389  
PHONE (636) 528-8591 FAX (636) 528-8506

MGCR2.W 1 PARTS LISTS GCR 2000

REB 01-05-06 / 02-15-06

ITEM	PART	CODE	DESCRIPTION
1	4737A	P	PART: CABINET COVER [CRESCO] - GC500, 750, 1000
2	4407A	P	PLASTIC CAP GLYCOL FOR SS RESERVOIR TANK
3	3904A	P	SCREW SS 1/4-20 X 3/4 SL PAN HD
4	4743A	P	PART: MOTOR WALL BRKT 2 PUMPS - GCO ALL
5	4742A	P	PART: MOTOR PUMP BRKT BRACE [ACU] - GCO2003, 2004
6	4393A	P	MOTOR PUMP 1/3HP 115V/220V EMERSON [PROCON #828] (CAN REPLACE 5049
7	4339A	P	CLAMP PUMP [PROCON #1113]
8	5416A	P	PUMP NYLON GLASS FILLED COUPLING [PROCON #1143-2]
9	5414A	P	PUMP W/NYLON GLASS FILLED COUPLING [PROCON #102C100F11BB-130] - G
10	4898A	P	INSULATION PUMP RIGHT SIDE [LANCER #50-0113]
11	4899A	P	INSULATION PUMP LEFT SIDE [LANCER #50-0270]
12	4790A	P	GLYCOL PRE-FILTER ASSY [CSC #000010] - GC ALL
13	2637A	P	LEG CABINET 4" ADJ
14	5779A	PA	TANK WATER ASSY TYPE 2 WITH THREE EVAP TUBES - GCA2000, 3000
15	4781A	P	SWITCH FLOAT ASSY (OSPN 32 5288 000)
16	4776A	M	PLUG GLYCOL TANK .50 DIA PICKUP/DISCHARGE OPENING (R 5903A) - GC
17	5733A	P	THERMISTOR W/EXTENDED LEADS - GLYCOL
18	4373A	P	NUT SS 1/4-20 HEX WITH TOOTHED WASHER (SPN 18 9429 000)[ALLOY #NK
19	5949A	P	BRASS CONNECTOR MALE 3/8 MPT X 1/2 BARB [CSC #125-86] - GC ALL
20	5898A	P	REF VALVE ORIFICE #9 FOR TXV VALVE (DPN# 5681A)[DANFOSS #068U1039
21	5016A	P	BRASS SCREW 8-32 X 3/8 THUMB [ALLIED #16C37SK21]
22	4751A	P	PART: SHIELD FOR THERM ELEC [CRESCO] - GCO750, 1000, 2000
23	5981A	P	LABEL WIRING SCHEMATIC - GCR2000
24	5900A	P	TUBING REINFORCED PVC NT 80 1/2 ID X 13/16 OD/FT [ADVANCED BEVERA
25	5727A	P	CLAMP HOSE STEPLESS 22.6 [MANITOWOC #16701041] - GLYCOL
26	4779A	P	SS TUBE PICKUP/DISCHARGE W/.5" BARB [FITTINGS INC.] - GCO ALL
27	5663A	P	REF VALVE SOLENOID COIL 208/240V [DANFOSS #018Z7611] - GCR
28	5662A	P	REF VALVE SOLENOID 5/8 SWEAT (EVR15)[DANFOSS #32F1171] - GCR
29	4798A	P	VALVE REFRIG ACCESS CU W/CORE (5/PK)[UNITED REFRIGERATION #A31004
30	5087A	P	SCREW SS 1/4-20 X 3/4 SL HEX HD (SPN 04 0065 000)[ALLOY #SIMSSS14
31	4741A	P	PART: MOTOR FLOOR MTG BRKT 2 PUMPS [ACU] - GCO1003, 2003, 2004
32	5681A	P	REF VALVE TXV 404A 3/8 X 1/2 [DANFOSS #068U228700] - GC-EV ALL, B
33	3088A	P	SCREW SS 8-32 X 3/8 PH TRUSS HD (SPN 96 0653 000)[ALLOY #PTMSSS08
34	4771A	P	PART: THERMOSTAT BRKT SUPPORT - GCO ALL
35	4744A	P	PART: PANEL ACCESS [CRESCO] - GC ALL
36	5091A	P	NUT SS 8-32 KEPS (SPN 96 0897 000)[ALLOY #NKPSS08C]
37	5718A	P	MOTOR FAN 160 CFM 230V (SPN 96 1016 000)[L.W. SUPPLY PABST #5656S
38	4727A	P	GROMMET .500 ID (SPN 96 0998 000)[MCMMASTER #9307K26]
39	5777A	P	PART: CONDENSER OPENING PLATE W/FAN HOLES - GCR
40	4820A	P	PART: CABINET [CRESCO] - GC500, 750, 1000
41	5791A	P	GROMMET 1.50 ID [MCMMASTER #9307K84]
42	3024A	P	SCREW SS 8-32 X 1/2 PH TRUSS HD (SPN 34 3842 000)[ALLOY #PTMSSS08
43	5714A	P	FAN GUARD FOR 160 CFM MOTOR [L.W. SUPPLY #L072701] - GCW ALL, GCR
44	3550A	P	SCREW SS 8-32 X 2.0 PH TRUSS HD
45	3387A	P	LINECORD 220V SJO OR SJTO 115" (SPN 04 0097 000)[CORDSETS]
46	2662A	P	BUSHING SR-6P3-4 (SPN 18 6564 000)[LAMCOR #SR6P3-4]
47	5567A	P	FITTING HOSE BARB INSERT STRAIGHT 1/2" [NOR-CAL #HFC-228-35]
48	4662A	P	FITTING HOSE BARB BODY BULKHEAD PANEL MOUNT 1/2" [NOR-CAL #HFC-16
49	4774A	P	PLUG 1.25 DIA CABINET HOLE RUBBER [CAPLUGS] - GCO ALL
50	4775A	P	PLUG BUTTON .562 X 1.125 HOLE (SPN 96 0913 000)[ELECTRIC SWITCHES
51	5229A	P	SWITCH REFRIGERATION [WESGARDE #C1300XRBBR-602AR] - GLYCOL
52	3190A	P	SCREW MA 6-32 X 3/8 PH PAN SS (SPN 34 3326 000)[ALLOY #PPMSSS06C0
53	4656A	P	DISPLAY DIGITAL - GLYCOL CIRCUIT BOARDS

MGCR2.W 1 PARTS LISTS GCR 2000

REB 01-05-06 / 02-15-06

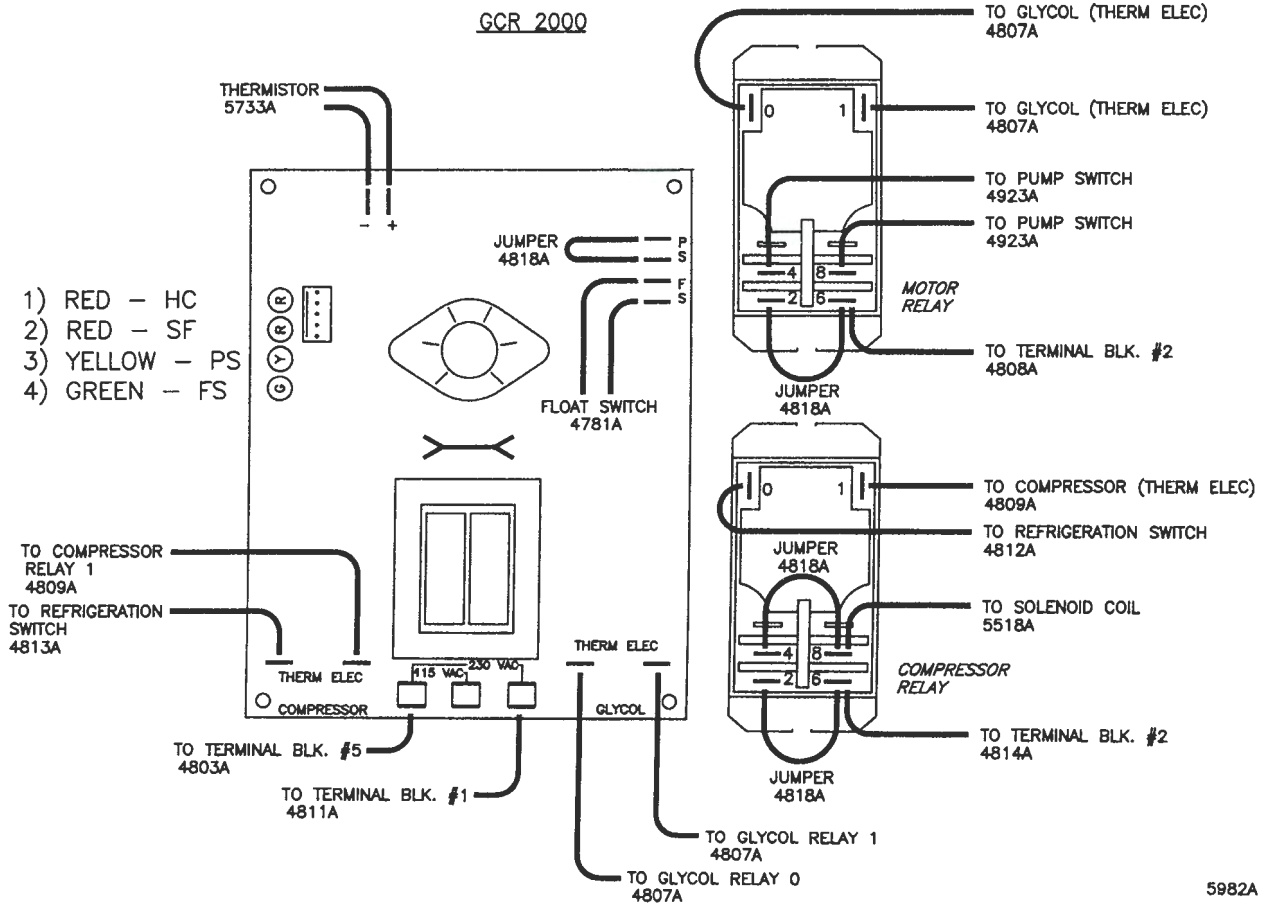
ITEM	PART	CODE	DESCRIPTION
54	5008A	P	PLUG .250 DIA CABINET HOLE PLASTIC (HEYCO #3053)
55	4823A	P	LABEL CONTROL PANEL - GC ALL
56	5007A	P	LABEL GLYCOL IN/OUT - GCO/GCW-500, 750, 1000
57	5009A	P	PLUG .875 DIA CABINET HOLE PLASTIC [H.W. ECKHARDT #1699]
58	4651A	P	RELAY CIRCUIT BOARD - GCO1002
59	5776A	P	BUSHING SNAP SB-1250-16 [H.W. ECKHARDT #2201]
60	4851A	P	NUT SS 6-32 KEPS (SPN 33 0181 000)
61	4770A	P	PART: THERMOSTAT BRKT [CRESCO] - GCO ALL
62	5056A	A	TERMINAL BLOCK ASSY - GC500, 750
63	3814A	P	SPACER .375 DIA X .187" LONG [HEYCO X332] - CP, CPA, GCR
64	4231A	P	SCREW SS 8-32 X 3/4 PH TRUSS HD
65	4657A	P	BOARD CIRCUIT (USES 4651A RELAY - EXTERNAL) - 1 & 1 1/2 HP GLYCOL
66	5737A	M	PLUG GLYCOL TANK .31 DIA THERMOMETER OPENING (R 5902A) - GCO ALL

## Parts Not Shown

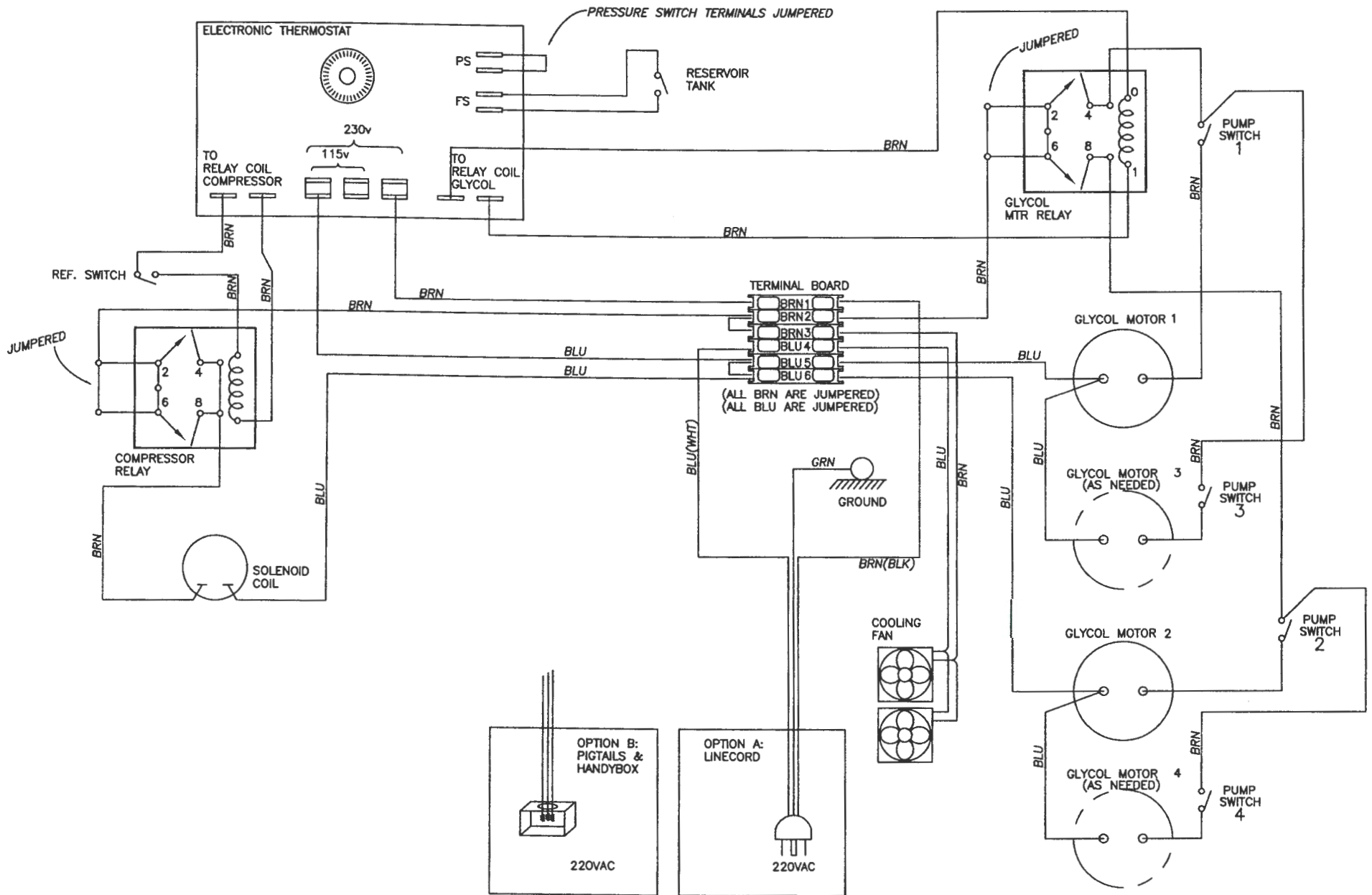
	4666A	PA	BOX SHIPPING CARTON ASSY 26-INCH (R 4664A (4), 4665A (4), 4667A (
	5556A	P	CU CAP 3/4 SOLDER (W7008)[UNITED #TC34] - GCR
	5557A	P	CU CAP 3/8 SOLDER (W7004)[UNITED #TC38] - GCR
	5661A	P	CU ELBOW 3/4 X 5/8 90 ELL (W2029)[UNITED #E3458] - GCR
	5362A	P	CU ELBOW 5/8" (W2022)[UNITED #E58]
	5909A	P	CU ELBOW 7/8 X 5/8 90 ELLS (W2736) [UNITED #EL7858] - GCR, GC
	5443A	P	CU FTG RED 3/8 X 1/4 (W1306)[UNITED #FR3814]
	4844A	P	CU TEE 3/8" OD (SPN 32 5650 000)[JOHNSTONE #R53-313]
	5363A	P	CU TEE 5/8 X 5/8 X 1/4" (W40140)[UNITED #T585814]
	5790A	P	CU TRAP 3/4" [JOHNSTONE #R53-991] - GCR ALL
	5982A	P	LABEL WIRING SCHEMATIC CONTROL BOARD - GCR2000
	5764A	K	KIT REBUILD REFRIGERATION VALVE FOR 5662A (EVR15)[DANFOSS #032F02
	4822A	P	LABEL "1 2 3 4" - GCO
	5979A	P	MANUAL SERVICE - GCR2000
	5163A	P	REF DISTRIBUTOR 3-CIRUITS [SPORLAN VALVE #1613-3-1/4-4][ALCO #4-4
	5771A	P	REF VALVE ORIFICE #7 FOR TXV VALVE (DPN# 5681A)[DANFOSS #068U1037
	4788A	M	TUBE ASSY GLYCOL PUMP1&2 DISCHARGE TO GLYCOL-OUT - GCO2000
	4789A	M	TUBE ASSY GLYCOL PUMP3&4 DISCHARGE TO GLYCOL-OUT - GCO2000
	4793A	M	TUBE ASSY GLYCOL-IN TO TANK - GCO2000
	2850A	P	WASHER #8 EXTERNAL LOCK (SPN 20 0718 000)[ALLOY #WEXSU08]
	4803A	P	WIRE BLU 13" THERM ELEC/TB5 [LAMCOR]
	4804A	P	WIRE BLU 18" GLYCOL MTR1/MTR3 OR MTR2/MTR4 [LAMCOR]
	5519A	P	WIRE BLU 24" SOLENOID COIL/TB6 [LAMCOR] - GCR 500, 1000, 2000
	4805A	P	WIRE BLU 32" TB5/MTR1 OR TB6/MTR 2 [LAMCOR]
	4807A	P	WIRE BRN 8" GLYCOL RELAY 0 OR 1/THERM ELEC [LAMCOR]
	4808A	P	WIRE BRN 9" GLYCOL RELAY 2 & 6/TB2 [LAMCOR]
	4809A	P	WIRE BRN 10" COMP RELAY COIL/THERM ELEC [LAMCOR]
	4923A	P	WIRE BRN 10" GLYCOL RELAY 4 OR 8/MTR SWITCH 1 OR 2 [LAMCOR]
	4810A	P	WIRE BRN 10" MTR SWITCH 1 OR 3/MTR SWITCH 2 OR 4 [LAMCOR]
	4811A	P	WIRE BRN 13" THERM ELEC/TB1 [LAMCOR]
	4812A	P	WIRE BRN 16" COMP RELAY COIL/REF SWITCH [LAMCOR]
	4813A	P	WIRE BRN 16" REF SWITCH/THERM ELEC [LAMCOR] - GC1000, 2000
	4814A	P	WIRE BRN 17" COMP RELAY 2 OR 6/TB2 [LAMCOR]
	4816A	P	WIRE BRN 24" MTR 3 OR 4/MTR SWITCH [LAMCOR]
	5518A	P	WIRE BRN 24" SOLENOID COIL/COMP RELAY 4 OR 8 [LAMCOR] - GCR 500,
	4973A	P	WIRE BRN 32" MTR 1 OR MTR 2/MTR SWITCH [LAMCOR]

INDICATOR LIGHT IDENTIFICATION (INDICATES CONDITION OF SYSTEM WHEN LIT)

- 1) RED - HOT/COLD RUN LIGHT: INDICATES COMPRESSOR IS RUNNING
- 2) RED - SENSOR FAILURE LIGHT: INDICATES SENSOR FAILED
- 3) YELLOW - PRESSURE SWITCH LIGHT: INDICATES JUMPER 4818A NOT INSTALLED
- 4) GREEN - FLOAT SWITCH LIGHT: INDICATES LOSS OF GLYCOL



# GCR 2000





Dove Manufacturing Co. Inc.  
 Installation Information for GCR-200x  
 (636) 528-8591

	ELECTRICAL USAGE		208/230 VOLT 1 PHASE	
MODEL	<u>2001</u>	<u>2002</u>	<u>2003</u>	<u>2004</u>
CIRC MTRS	2.1	4.2	6.3	8.4
FAN MOTORS	2.0	2.0	2.0	2.0
TOTAL AMPS	<hr/> 4.1	<hr/> 6.2	<hr/> 8.3	<hr/> 10.4
MINIMUM AMPS FOR WIRE SIZING	5	7	10	12
MAXIMUM FUSE SIZE	7	10	13	16

REFRIGERANT                                    404A 9 LBS MAX  
 DESIGN PRESSURE                            300 PSIG

TOTAL SHIPPING WEIGHT: 204 POUNDS  
 SIZE (INCHES): 26 X 26 X 16 HIGH (EXCLUDING 4" LEGS)